



HM Revenue  
& Customs

# Go online with HMRC

Your Personal Tax Account takes less than 5 minutes to set up and you can deal with HMRC online at a time that suits you.

## How do I get started?

1 Go to  
[www.gov.uk/personal-tax-account](http://www.gov.uk/personal-tax-account)

2 Sign in  
If you already have Government Gateway Credentials, use your user ID and your password.

### If you don't have a user ID, it's not a problem

- Choose the option 'Don't have a Government Gateway account' and follow the instructions.
- So we can securely identify you **make sure** you have a telephone number, your NI number and details of your, P60, payslips or passport to hand.
- **Remember** to make a note of your user ID as soon as you get it.

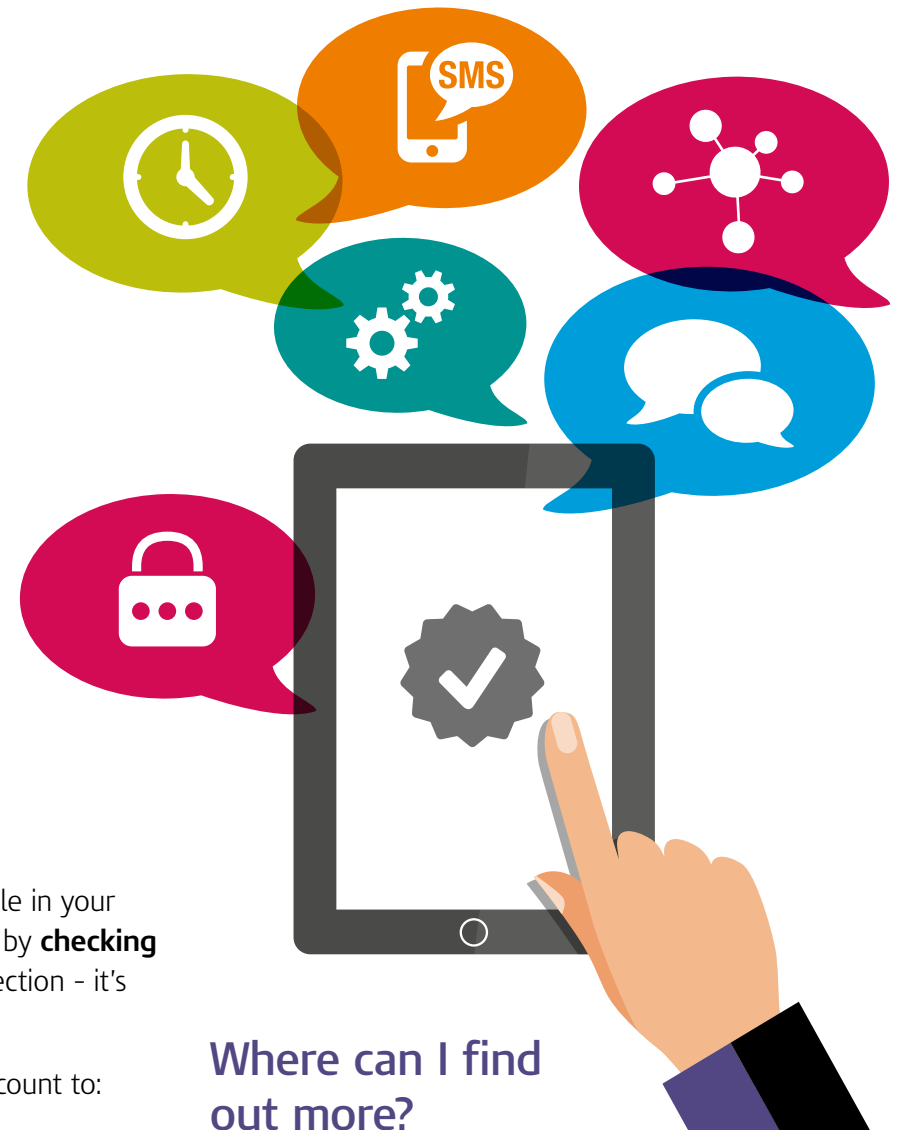
## What can I do online?

There are more than 30 services available in your Personal Tax Account. Get started today by **checking your address** in the 'Personal details' section - it's quick and easy to update your details.

You could also use your Personal Tax account to:

- check your Pay as You Earn (PAYE)
- see your State Pension forecast
- manage your tax credits including renewing online and reporting changes
- apply for Marriage Allowance - and more.

More services will be included, so keep coming back to see what's new.



## Where can I find out more?

Our YouTube video, 'Personal tax accounts - HMRC's online service for individuals' guides you through the process. You can find this and other useful online guides by searching YouTube for our 'HMRCgovuk' account.

We're always updating and improving our services based on what you tell us. Use the feedback service to let us know about your experience before you logout.