



This access statement does not contain personal opinions as to our suitability for those with access needs, but aims to accurately describe the facilities and services that we offer all our visitors.

## Access Statement for the Bell Pettigrew Museum

### Table of contents

Introduction .....	2
Pre-arrival .....	3
Car parking and arrival .....	3
Dedicated parking space .....	3
On street parking (South Street) .....	5
Entrance to the Bute Building .....	9
Main entrance .....	11
Attractions (displays, exhibits, etc.) .....	14
Public toilets .....	16
Nearest toilets (not accessible) .....	16
Men's toilets: .....	18
Ladies' toilets: .....	18
Larger toilet: .....	18
Accessible toilet .....	19
Grounds and gardens .....	24
Additional Information .....	24
Contact information .....	25
Address .....	25
Telephone .....	25
Email .....	25
Website .....	25
Hours of operation .....	25
Local public transport .....	25

## Introduction

Situated in the town of St Andrews, approximately 0.3 miles (0.5 km) from the main centre, the Bell Pettigrew Museum is the University's zoology museum. It is a rare survival of a Edwardian teaching museum, and wonderfully atmospheric.

The Bell Pettigrew Museum is situated in St Mary's Quadrangle, off South Street, in the Bute Building. Access to the museum is through the quadrangle from the main street. After a gentle incline, the terrain is level, with a combination of cobbled stones on entry to the quadrangle, becoming tarmac once inside the quad.

Facilities:

- Ground floor exhibition gallery with permanent displays
- One accessible parking space at the front of the museum
- Public toilets
- Accessible toilet in building
- Baby change unit can be provided if requested

We look forward to welcoming you. If you have any queries or require any assistance, please phone (01334) 461660 or [email museumenquiries@st-andrews.ac.uk](mailto:museumenquiries@st-andrews.ac.uk) for further information.

## Pre-arrival

The nearest railway station is Leuchars, 10 miles (16km), approximately 20 minutes to St Andrews by car. Check the Scotrail website for [more details on Leuchars station facilities](#).

There is a regular bus service from Dundee via Leuchars station into St Andrews: Stagecoach route no.99, with low floor access, wheelchair access, and Wi-Fi. Please see the Stagecoach website for [bus transport timetables](#).

All no.99 buses will take you to St Andrews bus station, 0.5 miles (0.8 km) from the Bell Pettigrew Museum. The 99A, 99B and 99D will all take you into the centre of St Andrews - nearest stop to the Bell Pettigrew Museum is on South Street, outside the entrance to St Mary's Quadrangle, 0.1 miles (0.2 km) from the Bell Pettigrew Museum.

## Car parking and arrival

### [Dedicated parking space](#)

There is one dedicated accessible parking space at the side of the Bute Building, 17ft from the entrance.

The parking space can be accessed from Queen's Terrace, at the rear of the museum. Drivers can access the space via The Long Walk, through a black iron gate.

The route is illustrated in the following photographs:



*The entrance gate to the Long Walk as seen from Queen's Terrace.*





*The entrance gate to the Long Walk.*



*The Long Walk leading to accessible parking space.*



*The entrance to the building with accessible parking space in view.*





*Accessible parking space next to the entrance to the building, Door C.*



*Ramp to Door C.*

There is level access from the parking space to the entrance. The path is tarmac, and the ramp is paved. The parking space is lit at night by two wall-mounted lights on either side of Door C.

### **On street parking (South Street)**

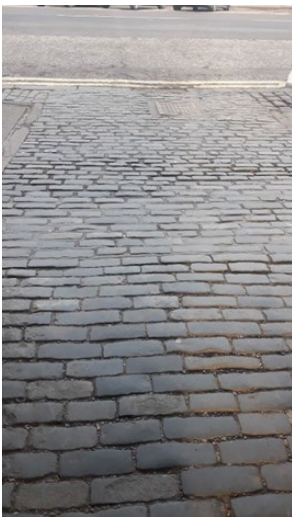
Additional parking is available on street, on South Street, immediately outside St Mary's Quadrangle, approximately 0.1 miles from Door C, the entrance to the Bute Building. This operates on a Pay and Display basis.

The tariff applies Monday-Saturday 9:00am-5:00pm and Sunday 1:00pm-5:00pm. The on-street parking charge is waived if a Blue Badge is displayed in the vehicle. The quadrangle is accessed through an iron gate, with a clear opening width of 43in (109cm).

The route to the Museum from South Street is illustrated in the following pictures:



*View of on-street parking and entrance to St Mary's Quadrangle from South Street.*



*Gentle slope into the quadrangle from South Street, with cobbled surface.*



*Entrance to the quadrangle.*





*Gated entrance to the quadrangle.*



*View into quadrangle from the entrance.*



*Terrain of quadrangle showing transition from cobbled stone to tarmac.*



*Route towards the Bute Building from the quadrangle walkway.*





*Door C, entrance to the Bute Building.*

### Entrance to the Bute Building

The entrance to the Bute Building, Door C, is comprised of double doors. The right-hand door opens with a clear door opening width of 34.5 in (88cm). This door opens outwards.

The same door is operated by a fire door push bar from inside for exit.



*Door C, Bute Building*

A ramp is present leading to Door C. The width of the ramp is 41 in (104cm) with the angle of the bend 56 in (142cm).



*Ramp leading to Door C.*



*Paved stones and slight incline on the ramp.*

## Main entrance

Inside the external door, Door C, is a vestibule, leaving 77.5 in (197cm) between Door C and another set of internal doors. These internal doors open outwards into the vestibule. They have the clear opening width of 32 ins/ 81.5cms for a single door and 64 ins/ 163cms for both doors.

The vestibule is tiled with an unfixed mat on entry.



*Door C open with push bar exit.*



*Closed vestibule doors and entrance hall.*



The floor surface is tiled with a matted area on entry that is not fixed. The entrance area is lit by ceiling lights.



*Internal doorway leading to the museum.*

The main entrance to the Bell Pettigrew Museum is on the ground floor.

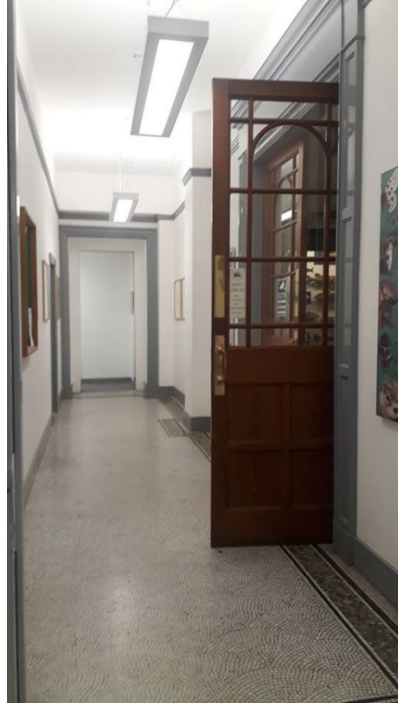
The entrance is accessed through another doorway, measuring 38in (97cm), opening outwards. This door is left open during opening hours. Signage for the museum is positioned above this doorway.

The main museum entrance is comprised of another set of double doors, with a door clearance of 33.5in (85cm) for a single door and 67in (170cm) combined. These doors open both inwards and outwards.

Entrance is free of charge to all visitors.

Guide and Assistance dogs are welcome.

There is no café on site.



*Main doors to Bell Pettigrew Museum; closed and open.*



*Main doors to Bell Pettigrew Museum; looking in and looking back to the corridor.*

## Attractions (displays, exhibits, etc.)

The gallery is located on the ground floor with level access from the entrance.

Flooring is tiled.

The Bell Pettigrew Museum comprises of one gallery. Access between display cases ranges from 91.5in (232cm) horizontally to 73in (185cm) vertically.



*Views of the Bell Pettigrew Museum.*

Between some cases, independently mounted exhibits create an uneven distance between cases. The narrowest of these is pictured above and measures 61in (155cm).





*Space between display cases; highlighting the narrowest point between an exhibit and case.*

Interpretation in the galleries is in the form of printed text panels and labels.

Some text panels and labels are positioned above eye level in the cases.

We run an active [events programme](#). Please see our Museums Events page for more information.

Seating is available in the museum. Chairs (with accompanying tables) are available within the gallery space and at the rear of the museum.

The gallery is lit with a combination of ceiling lights as well as lighting inside display cases.



*Seating and tables available in the central area of the museum; Seating at rear of museum.*

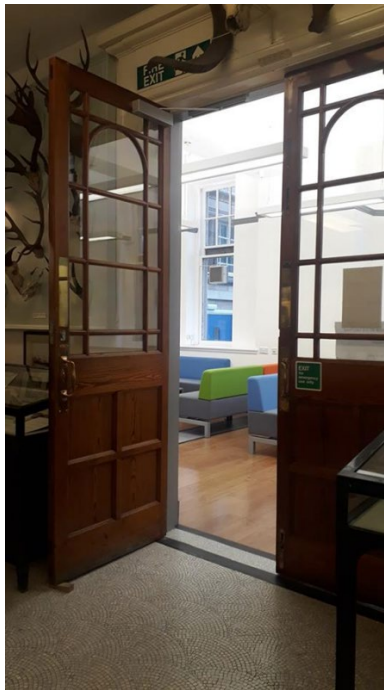
## Public toilets

### Nearest toilets (not accessible)

The nearest public toilets are on the ground floor. These facilities do not include an accessible toilet.

The largest toilet available in these facilities measures 81.5in (207cm) x 50.5in (128cm).

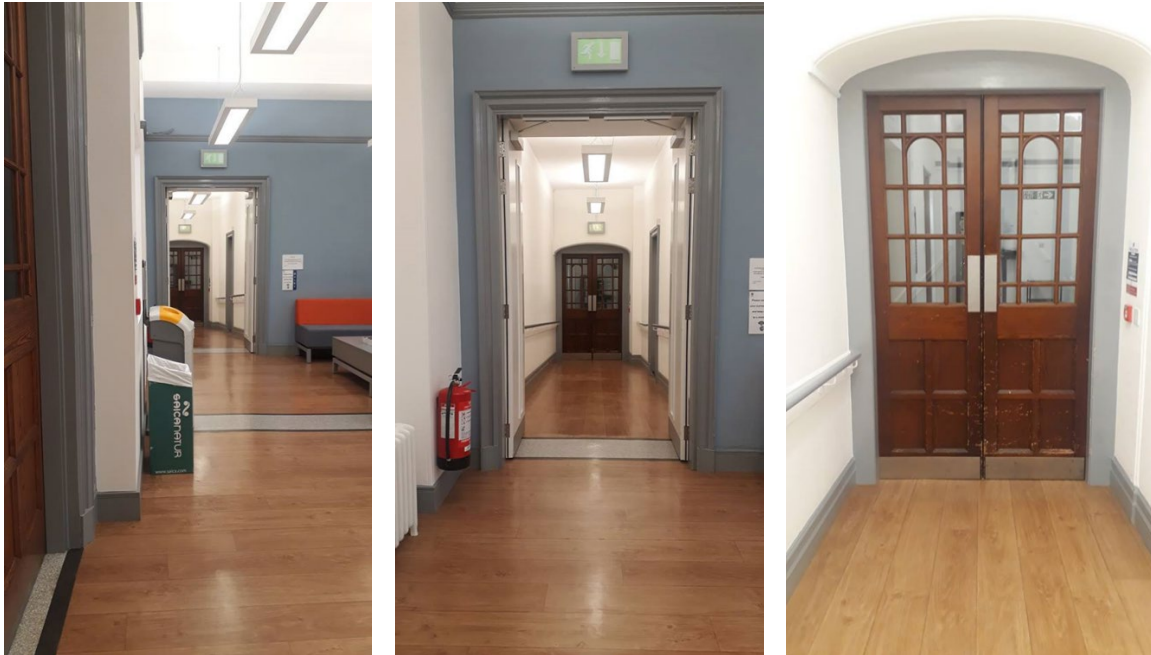
Ground floor toilets are accessed from the rear of the museum. Rear museum double doors open inwards towards the corridor to the rear, with a door clearance of 33.5in (85cm) for a single door and 67in (170cm) combined.



*Rear doors out of the museum.*

Public toilets are situated down a ramp. This set of double doors has a door clearance of 24in (61cm) for a single door and 48in (122cm) combined. Doors open inwards down the ramp. A handrail runs alongside this ramp on either side.

Flooring of the ramp is vinyl.



*The two sets of double doors and ramp; the second set of double doors at the bottom of the ramp.*

Another set of double doors is situated at the bottom of the ramp, measuring 25in (63.5cm) single door clearance and 49in (124cm) for both combined. Doors open inwards towards public toilets.

Flooring in foyer between ramp and public toilets is carpeted.



*View of open doors at bottom of ramp towards toilets and view of toilet entrances from the open doors.*





*View of entrance to toilets.*

#### **Men's toilets:**

2 cubicles, 4 urinals. Push taps. Doorway and cubicle clearance of 21in (53.5cm).

#### **Ladies' toilets:**

2 cubicles. Push taps. Doorway and cubicle clearance of 21in (53.5cm).

#### **Larger toilet:**

A larger toilet, measuring 81.5in (207cm) x 50.5in (128cm) is accessed through Ladies'. Toilet seat height is 17.7in (45cm) from the floor. Doorway clearance of 30in (76cm).

Toilet floors are vinyl. Toilets are lit by fluorescent lighting. Lights are activated by automatic motion sensor.



*Largest toilet nearest the museum.*

## Accessible toilet

An accessible toilet is also available in the Bute Building, that staff will be more than happy to assist accessing. It is 65 paces from the museum entrance.

There may be occasions when swipe access is in operation. Museum staff will be on hand to assist.

On exiting the main entrance to the Bell Pettigrew Museum, a right turn will bring you to a ramp with vinyl flooring.

The doorframe entrance to the ramp is 38in (97cm).

The ramp width is 43in (109cm).

An Accessible toilet is also available close by in reception area of the Laidlaw Music Centre building. When this building is open visitors are also welcome to use these facilities.



*View of ramp from museum exit and ramp itself, with turn in ramp on entrance.*

On exiting the ramp, a set of double doors opening outwards with clearance of 23in (58cm) for a single door, 46in (117cm) for double doors.



*Doors and doorway on exiting ramp.*



*Doorway and ramp as viewed from the other side.*

Through a tiled lobby another set of double doors opening inwards with clearance of 29in (76cm) single, 58in (147cm) for double doors.





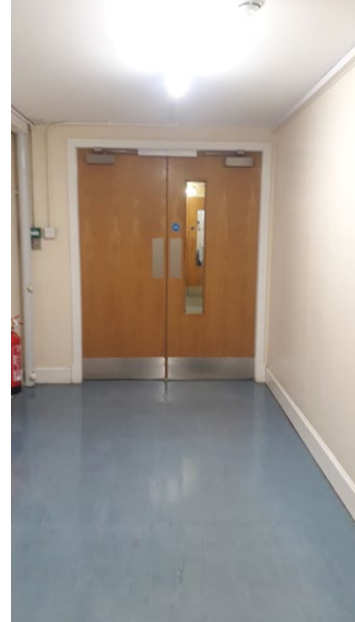
*Double door at tiled lobby.*

Through another tiled lobby, a set of double doors that open inwards with clearance of 30in (76cm) for single, 60in (152cm) for double doors. This lobby is lit with wall lights.



*Second tiled lobby and door leading to corridor.*

Double doors lead to a corridor with two further sets of double doors. Both sets of doors open outwards, and have clearance of 30in (76cm) single, 60in (152cm) for double doors. The flooring is vinyl and it is lit with strip lights on the ceiling.



*Two further sets of double doors leading to accessible toilet.*

The accessible toilet is on the right of the corridor after exiting the final set of double doors.



*Corridor to accessible toilet (first door on right).*

The door to access the toilet has a clear door width of 36ins/91cms and opens outwards.



*Entrance to accessible toilet.*

The toilet measures 95in (241cm) by 57in (145cm).

Toilet seat height is 18.5in (47cm) from the floor.

Emergency cord and grab rails are present.

Flooring is vinyl.

Lights are fluorescent and activated by motion sensor.

The tap rotates horizontally.

There is an automatic hand dryer.



*Internal photograph of accessible toilet.*



## Grounds and gardens

Benches are available in St Mary's Quadrangle, where the Bell Pettigrew Museum is situated.

The walkway through the quadrangle is tarmac, except for cobblestones at entrance as described in this document's Introduction.

The walkway in the quadrangle is lit at night by freestanding streetlights and bollard lights.

## Additional Information

- Baby change unit can be provided if requested.
- All Visitor Services staff have completed the Visit Scotland Accessibility training module.
- Fire exits are clearly signposted.
- All staff are trained in evacuation procedures.

## Contact information

### Address

The Bell Pettigrew Museum of Natural History, The Bute Building, Door C, St Andrews, Fife, KY16 9TS

### Telephone

(01334) 461660

### Email

[museumenquiries@st-andrews.ac.uk](mailto:museumenquiries@st-andrews.ac.uk)

### Website

[www.st-andrews.ac.uk/museums](http://www.st-andrews.ac.uk/museums)

### Hours of operation

Visits by prior arrangement or during public events.

Open on weekday afternoons in spring, summer, and autumn Fife school holidays.

### Local public transport

Please check the Scotrail website for [more information on Leuchars railway station](#).

Find out more about [bus times at St Andrews Bus station](#) on the Stagecoach website.