



University of St Andrews
Scotland's first university

600 YEARS
1413 – 2013

Sustainable Development

Postgraduate Study 2011 Entry





Sustainable Development

Why does Sustainable Development matter?

Humanity faces enormous environmental and developmental challenges in the twenty-first century. The United Nations has identified five global issues of particular concern: the provision of clean water and adequate sanitation, energy generation and supply, human health, food production and distribution, and the continuing threat to biodiversity.

Sustainable development is now widely regarded as the most promising framework within which these challenges can be addressed, moving humanity towards the creation of a more just and environmentally sustainable 'global village'.

There is no single description of what Sustainable Development means, but one commonly used definition can be found in the 1987 Brundtland Report *"Sustainable development is development that meets the needs of the present without compromising the ability of future generations to meet their own needs."*

We are living in a time of tremendous opportunity, as people are working together across the globe to address the serious challenges facing humankind. We must learn to live within environmental limits and embrace sustainability as the key concept that will allow us to develop in the twenty-first century and beyond.

Our postgraduate programmes in Sustainable Development, coordinated by the School of Geography & Geosciences, will enable you to develop the knowledge and understanding you need, not only to understand all these issues from multiple perspectives but also to utilise the knowledge you gain to tackle them and realise the opportunities they create.

Postgraduate Programmes in Sustainable Development

www.st-andrews.ac.uk/sasi

MSc in SD (One Year taught programme)

Postgraduate Diploma in SD (Two Semesters taught)

Postgraduate Certificate in SD (One Semester taught)

MRes in SD (One Year taught programme, primarily for students wishing to continue to PhD)

“My research interests focus around how accounting (as an organising and controlling technology) may allow or inhibit organisations to behave in ways that are more sustainable. In addition, I have a policy role as the Vice-Chair (Scotland) of the Sustainable Development Commission. In this role (as the Government’s formal advisor for sustainable development) I try to ensure that the Government can play its part in creating a sustainable world. Both my research and policy work feed into the modules I teach on the Masters programme and I look forward to welcoming you to the programme as its Director.”

Professor Jan Bebbington



Sustainability and the University of St Andrews

St Andrews is Scotland’s first university and the third oldest in the English speaking world, founded in 1413. As well as celebrating its long history, the University of St Andrews embraces its responsibilities for the future, by placing sustainable development at the heart of its operations along four integrated fronts: governance, teaching, research and sustainable estates management. The idea is to integrate sustainability into day-to-day thinking and decision making processes of the University.

An undergraduate degree in Sustainable Development, the first of its kind in the UK, was introduced by the University in 2004, with the first cohort of students graduating in the summer of 2008. This degree’s excellence was recognised by its winning of the Green Gown Award in 2009.

The University is investing heavily in its estate and buildings with a view to making these vital assets as demonstrably sustainable as possible. The £1.7M SALIX energy fund is helping us to achieve this. New buildings and major refurbishments of existing buildings are being designed to meet strict environmental standards. The dedicated Estates Environment Team of professionals works closely with Schools and Units to raise awareness and understanding of operational sustainability issues.

The initiatives undertaken by the University (and in partnership with the Students’ Association) resulted in St Andrews receiving the first ever award for Outstanding Contribution to Sustainable Development in *The Times Higher Education Awards 2006*.

The University is working with a range of key stakeholders to promote Sustainable Development across the Higher Education sector. As an active member of the Environmental Association for University and Colleges (EAUC) the University shares learning across the Higher Education and Further Education sector.

Professor Jan Bebbington, Director of the St Andrews Sustainability Institute, featured in the top ten of the first “Scottish Green List”. Drawn from nominations by the public and developed by the Scottish Sustainable Development Forum, the list recognises the environmental efforts of people throughout the country. Her work using accountancy tools to track environmental problems is respected across the world and her research has aided the University in becoming a leading centre on sustainability.

"St Andrews is one of the best places in the world to study Sustainable Development. I graduated from the award-winning Sustainable Development undergraduate programme in 2009 and wanted to continue my studies. The Masters course provided me with the perfect opportunity to do this. The course places a strong emphasis on drawing links between theory and practice which is paramount in developing a critical understanding of sustainability. There is great freedom to choose courses in a range of subjects from ecology to economics. Additionally, in second semester we receive a series of lectures from experts in their respective fields of sustainability."

ALEX
Ilford, Essex
Current MSc student



Key Benefits of our Programmes

Interdisciplinary teaching provides multiple perspectives – You will be taught by experts from disciplines across the University and beyond. This will enable you to understand and embrace sustainability from multiple perspectives and take a holistic approach. The ability to integrate knowledge is at the core of the degree.

Develop your research abilities so you have the capability to tackle the issues – Sustainable development problems do not fit into neat boxes. We will develop your ability to understand the complex nature of these problems and how to create strategies that will allow you to overcome them, both now and in the future.

Options and a dissertation so you can personalise your taught degree – In addition to the core set of subjects, a wide range of taught options are available. Coupled with your dissertation research in an area of your interest, these choices allow you to tailor your degree to suit your needs.

Practical experience supplements leading theory – The lecturers and visiting speakers all have practical experience of advising government, business and communities on aspects of sustainable development as well as being leaders in their academic fields. Coupled with the leading role the University plays in implementing sustainable development initiatives in its own estate, you will get the benefit of access to current practice as well as leading theory.

Field trips bring the subject alive – Exploring practical applications of sustainable development brings you out of the classroom and into real world contexts.

Teaching which will support and challenge you, whether or not you have a SD background – Our degree structure caters for students with differing levels of initial sustainable development specialist knowledge. There is a dual track entry process for the first six weeks, after which you will be taught as a full cohort.



Overview of the Taught Programmes

Starting in September, the MSc comprises two semesters of taught modules before you undertake your own research project (dissertation) during the summer months.

- During the first semester there are two core modules and one option choice. Your first core module depends upon your prior experience, you will either do *Introduction to Sustainable Development Issues*, or *Review of Sustainable Development*. The second core module is *Knowledge and Sustainable Development*.
- During the second semester there is one core module, *Master Class in Sustainable Development* and a choice of two options.
- During the summer, students undertake a research project of their choice under the supervision of an experienced member of staff.

Semester 1 (September to January)	Semester 2 (February to May)	Semester 3 (June to August)
Introduction to SD Issues or Review of SD Issues	Master Class in SD	Research Project
Knowledge and SD	Option Choice 2	
Option Choice 1	Option Choice 3	

A Postgraduate Diploma can be awarded after successful completion of two semesters of taught modules, and does not require the research dissertation. The Postgraduate Certificate comprises the first semester of taught modules.

For the MRes in SD, students will take *Knowledge and Sustainable Development* (Semester 1), *Master Class in Sustainable Development* (Semester 2) and the research project (Semester 3). You will also have the choice of one option module (as per the list overleaf). MRes students will also take four research training modules in Semesters 1 and 2 that are provided to all social science research students across the University.



Core Modules & Options

Core Modules

Introduction to Sustainable Development Issues or Review of Sustainable Development

– Depending upon your prior experience, this module will introduce you to, or develop your knowledge across, areas such as the history and genesis of sustainable development, an understanding of earth systems science, the social and economic systems that shape humanity and impact on the environment, and an understanding of how these systems interact.

Knowledge and Sustainable Development – This module will explore the nature of knowledge within different academic disciplines, the application of knowledge to develop policies within SD, and training in deconstructing SD problems.

Master Class in Sustainable Development – This module will enable an in-depth study of a number of areas. These areas will be investigated via group work with the research being initiated by invited ‘masters’ from the appropriate areas.

Options

Option choices will vary from year to year, but examples of potential modules provided by the various Schools contributing to the programme include:

- *Environmental Management & Policy*
- *Environmental Risk*
- *Global and Local Issues of the Environment*
- *Wildlife Population Assessment*
- *Quantitative methods in Social Science research*
- *Qualitative methods in Social Science research*
- *Management as if the Earth Mattered*
- *Responsibility, Sustainability and Accountability in Organisations*
- *Anthropology, Indigenous peoples and Resource management*
- *Disease and the Environment*
- *Geographic Information Systems for Social Research*

"My research focus is on companies that have an environmental/sustainability orientated mission and how these companies are challenging the meta-narratives in society and the conventional theories of management particularly with regards to conceptions of strategy. My teaching concerns companies and sustainable development and the development of strategy and marketing. Outside of my teaching and research I consult on sustainability issues to the public and private sector and judge a number of environmental awards."

Nick Barter



Research Centres and Institutes

There are a number of research centres and institutes at the University of St Andrews who work on sustainability and related issues.

St Andrews Sustainability Institute (SASI)

SASI is an interdisciplinary research institute within the University which draws on expertise from across the whole range of academic disciplines and the Estates energy and environment team to achieve our mission:

"To facilitate research, teaching, knowledge transfer and debate in order to enable the transformational change required to integrate sustainable thinking and actions into the foundations of everyday life."

SASI encourages researchers to collaborate across the artificial academic subject boundaries to work on the 'big picture' of sustainability. SASI has developed links with policy and public bodies and private sector organisations, providing consultancy, training and advice. We also host a series of workshops and seminars. SASI also acts as a source of advice to the University as it seeks to align its own operations with the principles of sustainable development. www.st-andrews.ac.uk/sasi

Institute for Environmental History

The Institute provides both undergraduate and postgraduate teaching and supervision in environmental history. Current strengths for postgraduate supervision are the intellectual history of environment, history of science, history of waste, and the history of environmentalism. Past research has focused on woodland history, coastal archaeology, the history of pollution and waste, land use and cultural landscapes, nature conservation and countryside recreation, and species history. As part of its broader research culture, the Institute has been a UK leader in coastal archaeology through the auspices of SCAPE (Scottish Coastal Archaeology and the Problem of Erosion) for a number of years. Archaeologist Tom Dawson has been the moving force behind this award-winning work. He has recently been joined by research fellow Joanna Hambly. www.st-andrews.ac.uk/envhist



Centre for Social and Environmental Accounting Research (CSEAR)

CSEAR is a unique, international, membership-based organisation with around 700 active members, fellows and associates in over 40 countries. CSEAR's international network supports students, practitioners, scholars and educationalists in all aspects of the education, research and practice of social, environmental and sustainability accounting, reporting, auditing, finance and taxation.

CSEAR plays a pivotal role in the intellectual life of social and environmental accounting and accountability through its journal, its e-newsletter, ever-developing website, specialist library and its conferences. The Annual International Congress on Social and Environmental Accounting Research is held in St Andrews and it supports offshoot conferences in Australasia, Brazil, Canada, Portugal, USA, Spain and Italy. The Centre employs two research fellows and a number of interns to assist in these activities. www.st-andrews.ac.uk/management/csear

Centre for Research into Ecological and Environmental Modelling (CREEM)

The Centre for Research into Ecological and Environmental Modelling is an interdisciplinary research centre at the University of St Andrews, linking researchers from the Schools of Mathematics & Statistics, Biology and Geography & Geosciences. Our remit is to develop and apply advanced mathematical and statistical methods to practical problems in biology, ecology and geography.

The Centre is divided into research units, some of which are housed within our purpose-built facility at the old University Observatory and others of which are housed in their respective Schools. We have a lively seminar programme and welcome research visitors. The Observatory also contains a tailor-made teaching and computer classroom, and we hold regular training workshops for practitioners. www.creem.st-andrews.ac.uk



"As an anthropologist, I take 'Sustainable Development' to be the product of a particular culture at a particular time: no doubt its power to capture, describe and motivate is in some part due to the cultural history that we bring to it. My research work is based on the cultural reality of a Papua New Guinean life-world, and focuses on cosmological knowledge-practices, and the cultural reception of mining. This gives me a vantage point from which to look back on Euro-American cultural realities such as genetic engineering and climate change."

Dr Tony Crook

Leading the Way

It is no accident that the University of St Andrews is leading the way in offering a Master's in Sustainable Development.

The University not only has sustainability at the heart of its Strategic Plan, but it has also been recognised for its achievements. It offers, as well as receives, environmental awards.

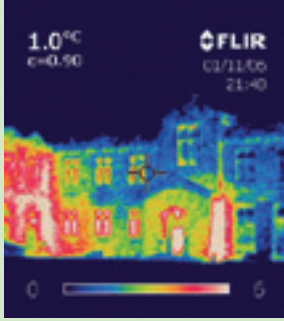


The St Andrews Prize for the Environment

Some Possible Career Paths

Your question should not be "What can I do with a degree in Sustainable Development?" but instead "Can you imagine a future where it could not be useful?" Sustainability impacts upon almost all aspects of life, so your future career could take you in one of many different directions. For example, you could:

- Work in industry addressing sustainability aspects of business management, engineering, planning, transport, project management, construction, waste, energy or environmental management.
- Make yourself heard as a sustainability researcher or policy advisor in local, regional or national government, NGOs and campaigning groups.
- Act as an advisor to supra-national bodies such as the United Nations, World Bank, European Union, the OCED.
- Become a sustainability advisor and assessor working directly in private sector organisations, industry or as a consultant (in both mainstream and specialist businesses).
- Help others directly through development or aid work.
- Spread the word by outreach and education in sustainable living via public or third sector organisations (e.g. Councils or NGOs).
- Stay at university to research a PhD, perhaps eventually going on to a teaching or research career.



Thermal image of a University building



Funding

For the most current information on Funding and Scholarships see the Postgraduate Prospectus. www.st-andrews.ac.uk/scholarships and www.st-andrews.ac.uk/sasi/postgraduate/msc/

St Andrews has various scholarship opportunities for prospective St Andrews postgraduate students. Our 'Recent Graduate Discount' is designed to recognise the loyalty of current St Andrews students and very recent St Andrews alumni when they apply for postgraduate courses here. Details of all our scholarship opportunities and initiatives can be found on our website. www.st-andrews.ac.uk/scholarships

Entry Requirements and Application Procedure

We welcome applicants from a variety of backgrounds – so whether you are coming straight from your undergraduate studies, changing career or want to develop your skills within your existing area of work, and are passionate about Sustainable Development, we would like to hear from you. The academic entry requirements for taught postgraduate study include:

- A 2.1 or equivalent (GPA 3.3 or better) in your first degree.
- English language competency of IELTS score 7, or TOEFL 600 or better, if your first language is not English.

We also recognise the value of practical experience, so please talk to us if you do not meet the academic criteria above as each application is judged on its merits.

Full details of fee structure and application procedure are given on the University website at: www.st-andrews.ac.uk/admissions/pg/

If you would like to chat to us informally before applying please do not hesitate to contact us (full details on the back cover).



“Sustainable Development education at St Andrews allows for flexible degree structures, which opens up exciting possibilities to learn about new fields through the lens of SD ethics and practice. This interdisciplinary approach to SD paves the way for “future proofing” higher education by reaching out across all faculties. Classes in Anthropology, Psychology and Management now all form part of the research toolkit for my PhD topic, Communities and Climate Change. A strength of the teaching is the focus on moving towards ethical leadership, but I like especially that social justice is one of the core principles, and the feeling that lecturers and students genuinely care.”

SVENJA
Berlin, Germany
Current PhD student

Research Degrees

The St Andrews Sustainability Institute acts as a co-ordination point and conduit for interdisciplinary research at St Andrews, and as such also facilitates PhD study in Sustainable Development issues. Students wishing to pursue a PhD in Sustainable Development are generally advised to take the one-year research degree (MRes in SD) prior to embarking upon their doctoral programme. If you are interested in pursuing a PhD ultimately you will be required to be supervised by a specific School (e.g. Geography & Geosciences, Biology, Management). Supervision of SD research topics may also involve staff from other disciplines. Please contact us on sasi@st-andrews.ac.uk to discuss your area of research interest, and we will guide you as to the most appropriate way forward.

GRADskills – enhancing researchers’ skills and employability

PhD and MPhil research students at St Andrews have access to GRADskills, an extensive and award-winning generic skills development programme for early stage researchers. It aims to support doctoral students and research staff in developing transferable skills to enhance their research capabilities and improve their future employability. The design of GRADskills has taken account of recommendations from the UK Research Councils, as well as current postgraduates, postdoctoral fellows and academic supervisors. Skills’ categories included are Research Management, Research Skills & Techniques, Research Environment, Communication Skills, Networking and Team Building, Personal Effectiveness and Career Management.

The high quality of the programme – which won the *Times Higher Education Award 2007-2008* for ‘Outstanding Support for Early Career Researchers’ – is maintained by using a wide range of trainers, consultants and other professionals to provide a wide range of courses, workshops, symposia, conferences, study visits and other events. Development of skills is further enhanced by the use of Development Needs Analysis and a Postgraduate Logbook as personal development planning tools. Participation in GRADskills also enables postgraduates to take advantage of additional opportunities offered in collaboration with ‘Vitae’ and other external organisations. Further details of the GRADskills programme are available at: www.st-andrews.ac.uk/gradskills

The St Andrews Sustainability Institute

University of St Andrews, Irvine Building, North Street
St Andrews, Fife KY16 9AL, Scotland, UK

T: +44 (0)1334 463904

E: sasi@st-andrews.ac.uk

W: www.st-andrews.ac.uk/sasi

Postgraduate Recruitment & Admissions

University of St Andrews, St Katharine's West,
16 The Scores, St Andrews, Fife KY16 9AX, Scotland, UK

T: +44 (0)1334 463325

F: +44 (0)1334 463330

E: pgrecruitment@st-andrews.ac.uk

Online Prospectus, Subject Leaflets and Admissions information:

www.st-andrews.ac.uk/admissions/pg

Visiting Days

There will be two Visiting Days, 17 November 2010 and 23 March 2011, when you can look round the University and talk informally to staff about courses. Booking for these events is essential. For more information see the prospectus or:

www.st-andrews.ac.uk/admissions/pg/Postgraduatevisits

This leaflet is available in Large Print, Braille or Audio on request to Print & Design: +44 (0)1334 463020

Education 
SCOTLAND
Innovative. Individual. Inspirational.



University of
St Andrews

The University's Terms and Conditions for matriculated students can be found in the PG Sponsio Academica at: www.st-andrews.ac.uk/pgstudents/rules as can the Policies for both Taught and Research Postgraduates.

Produced by Print & Design, University of St Andrews. August 2010.
Printed by J Thomson Colour Printers on Revive Pure White Silk 100% recycled paper.
The editorial and design team at the University of St Andrews thank all contributors.
Photographs by: Nick Barter, broad daylight, Rhona Rutherford and David Stutchfield.

The University of St Andrews is a charity registered in Scotland. No: SC013532

www.st-andrews.ac.uk