

Scotland's first university

Visiting Day Information



University
of
St Andrews

Thank you for your interest in visiting Scotland's First University. For almost six centuries we have been educating scholars from around the world and today we continue this tradition in the mediaeval town of St Andrews, renowned for being the home of golf and for the sense of community which exists between town and gown alike.

As a prospective student, it is very important to visit the University of St Andrews to really appreciate the quality of the teaching and research that is on offer, to find out about our vibrant student social scene plus to take in our splendid location. On any one of our Visiting Days you will be challenged, inspired and encouraged by what you hear, see and do.



Visiting Day Information

Structure of the Day

We have designed the Visiting Day programme to include as much as we possibly can. With this in mind, please note that most Visiting Days begin at 9.15 am and finish by 4.15 pm. All of the University buildings are within walking distance of each other. However, as you will be walking a lot during the day, please be prepared for the changeable Scottish weather and wear comfortable shoes!

Accommodation

If you are looking to spend a night in St Andrews prior to your Visiting Day, there are many hotels and guesthouses in the town to suit most tastes and budgets but it is always advisable to book early to avoid disappointment. Unfortunately, University residences are only available for overnight stays from June to August. For further details of accommodation in the town, please contact the Kingdom of Fife Tourist Board, 70 Market Street, St Andrews, Fife KY16 9NU Tel: +44 (0)1334 472021 or: www.standrews.co.uk

Refreshments and Lunch

The University welcomes over six thousand visitors each academic year. For this reason, it is not possible to offer refreshments/lunch during your visit.

Disability / Special Needs

If you have a disability or a special need, you can arrange to meet a Disability Adviser in our Student Support Services by telephoning: +44 (0)1334 462038 or emailing: disabil@st-andrews.ac.uk
www.st-andrews.ac.uk/ss

Travel Information & Parking

Registration is held in Lower College Hall, St Salvator's Quadrangle, off North Street and behind the University Chapel. Should you need a landmark to follow, please look for the tallest spire (with red clock face) as you head towards St Andrews. Please note that parking in this area of town is extremely limited and you will need to purchase parking vouchers (available from most local shops) in order to avoid a fine from the local traffic wardens. Free parking is available at the North Haugh. The North Haugh is a ten to fifteen minute walk to Lower College Hall. Detailed travel directions are available from:

www.st-andrews.ac.uk/visiting/GettingtoStAndrews

Friends and Family

Up to two members of your family/friends are welcome to accompany you to a Visiting Day. However, please note that due to space restrictions in certain venues, we cannot guarantee that there will be room to accommodate your friends/family who have travelled with you to some of the departmental visits.

Luggage

For security reasons and for your personal safety, under no circumstances can personal luggage be left in a University building during a University Visiting Day.



Visiting Day Programme

Registration*

You should aim to arrive between 9.15 am and 10.30 am in order to register in Lower College Hall. Both University staff and Student Ambassadors will welcome you. You will be given a Visiting Day Information Pack which amongst other things will include your personal itinerary for the day. Lower College Hall will remain open to visitors from 9.00 am - 12 noon where staff will be available to offer information and advice about the day.

If you arrive close to the time of your appointment with the Chaplaincy, Music or Sports Centres, you should go directly after registration to this appointment and return afterwards to Lower College Hall to go on the Walking Tour.

University Walking Tour (with a University Ambassador)

Leaving from Lower College Hall throughout the morning, these tours last about an hour with the last tour leaving at 12 noon and normally comprise of approximately twenty persons.

The majority of our tours take you around the central streets and main University buildings of St Andrews. The walking tour will finish with the Ambassador taking you to the foyer of one of our Halls of Residence where a Hall Tour Guide will meet you. Subjects covered during the Walking Tour include the University's history, student traditions and student life. Visitors are actively encouraged to ask questions during this tour.

Students' Association (The Union)

From 9.30 am until 5.00 pm, your Visiting Day itinerary allows you (and up to two guests) access to the Students' Association Building, also known as The Union. Visit: www.yourunion.net for more information on our Students' Association.

Student Accommodation

In order that we can provide our current student residents with the utmost privacy and security, the Hall of Residence tour can only take place on a rolling basis between the hours of 9.30 am and 12.00 noon.

The duration of a typical hall tour will be approximately 20 minutes. Most tours will include a visit to a student bedroom, a dining area plus social meeting rooms. Please note that you cannot choose which Hall of Residence you will stay in and that this tour is designed to give you a brief insight into an example of the wide range of residential accommodation that is available to our students. For further information see:

www.st-andrews.ac.uk/students/accommodation

Sports Centre Tour*

There are two Sports Centre visitor sessions: 10.45 am – 11.15 am and 11.30 am – 12 noon. These are held at the Physical Education Centre (located a brisk 10 to 15 minute walk out of the town centre). Experienced Sports Centre staff will give a tour of the facilities and provide you with information on the huge range of sports on offer at St Andrews.

www.st-andrews.ac.uk/sport

Music Centre*

The Music Centre visitor session starts at 11.00 am and is held at the Music Centre in the Younger Hall on North Street. St Andrews has an exceptionally busy musical life. Our facilities are excellent and tuition is available for singing plus a wide variety of instruments.

www.st-andrews.ac.uk/music



Registration*

You should aim to arrive between 9.15 am and 10.30 am in order to register in Lower College Hall. Both University staff and Student Ambassadors will welcome you. You will be given a Visiting Day Information Pack which amongst other things will include your personal itinerary for the day. Lower College Hall will remain open to visitors from 9.00 am - 12 noon where staff will be available to offer information and advice about the day.

If you arrive close to the time of your appointment with the Chaplaincy, Music or Sports Centres, you should go directly after registration to this appointment and return afterwards to Lower College Hall to go on the Walking Tour.

University Walking Tour (with a University Ambassador)

Leaving from Lower College Hall throughout the morning, these tours last about an hour with the last tour leaving at 12 noon and normally comprise of approximately twenty persons.

The majority of our tours take you around the central streets and main University buildings of St Andrews. The walking tour will finish with the Ambassador taking you to the foyer of one of our Halls of Residence where a Hall Tour Guide will meet you. Subjects covered during the Walking Tour include the University's history, student traditions and student life. Visitors are actively encouraged to ask questions during this tour.

Students' Association (The Union)

From 9.30 am until 5.00 pm, your Visiting Day itinerary allows you (and up to two guests) access to the Students' Association Building, also known as The Union. Visit: www.yourunion.net for more information on our Students' Association.

Student Accommodation

In order that we can provide our current student residents with the utmost privacy and security, the Hall of Residence tour can only take place on a rolling basis between the hours of 9.30 am and 12.00 noon.

The duration of a typical hall tour will be approximately 20 minutes. Most tours will include a visit to a student bedroom, a dining area plus social meeting rooms. Please note that you cannot choose which Hall of Residence you will stay in and that this tour is designed to give you a brief insight into an example of the wide range of residential accommodation that is available to our students. For further information see:

www.st-andrews.ac.uk/students/accommodation

Sports Centre Tour*

There are two Sports Centre visitor sessions: 10.45 am – 11.15 am and 11.30 am – 12 noon. These are held at the Physical Education Centre (located a brisk 10 to 15 minute walk out of the town centre). Experienced Sports Centre staff will give a tour of the facilities and provide you with information on the huge range of sports on offer at St Andrews.

www.st-andrews.ac.uk/sport

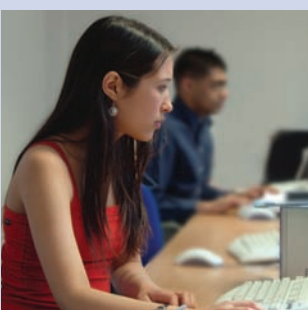
Music Centre*

The Music Centre visitor session starts at 11.00 am and is held at the Music Centre in the Younger Hall on North Street. St Andrews has an exceptionally busy musical life. Our facilities are excellent and tuition is available for singing plus a wide variety of instruments.

www.st-andrews.ac.uk/music

Chaplaincy*

The Chaplaincy Centre at Mansefield, St Mary's Place works closely with Student Support Services and offers a number of different services and facilities. This session normally takes place at 11.30 am.





Contact Information

**Visiting Day Co-ordinator
Admissions Reception
University of St Andrews
St Katharine's West
The Scores
St Andrews
Fife KY16 9AX**

T: +44 (0) 1334 462249

F: +44 (0) 1334 463330

E: stu.recruit@st-andrews.ac.uk

If you require this leaflet in an alternative format
please contact Admissions Reception